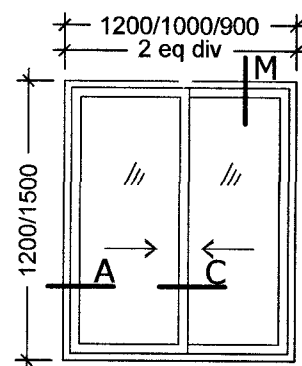


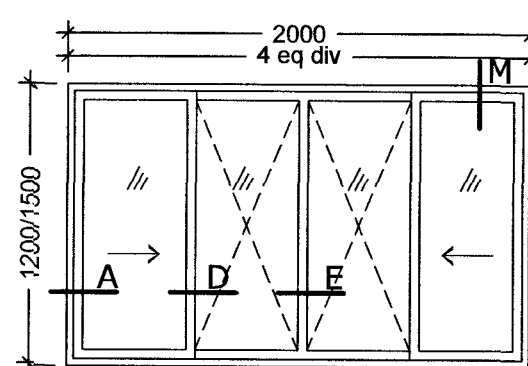
ELEVATION

ALW24 - 2400 X 1200
ALW18 - 1800 X 1200
ALW15 - 1500 X 1200
ALW24A - 2400 X 1500
ALW18A - 1800 X 1500
ALW15A - 1500 X 1500



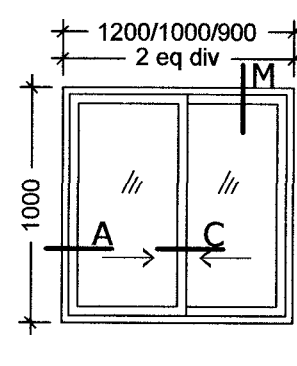
ELEVATION

ALW12 - 1200 X 1200
ALW10 - 1000 X 1200
ALW9 - 900 X 1200
ALW12A - 1200 X 1500
ALW10A - 1000 X 1500
ALW9A - 900 X 1500



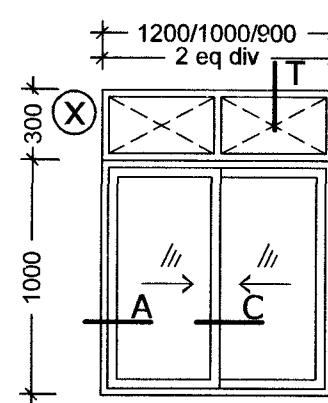
ELEVATION

ALW20 - 2000 X 1200
ALW20A - 2000 X 1500



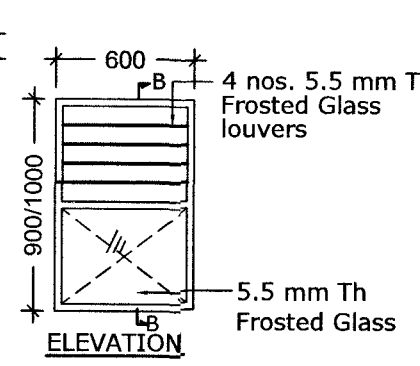
ELEVATION

ALWK12 - 1200 X 1000
ALWK10 - 1000 X 1000
ALWK9 - 900 X 1000



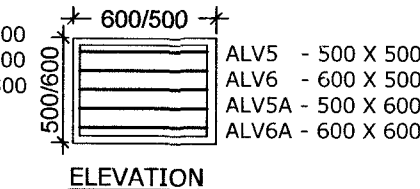
ELEVATION

ALWK 12X - 1200 X 1300
ALWK 10X - 1000 X 1300
ALWK 9X - 900 X 1300



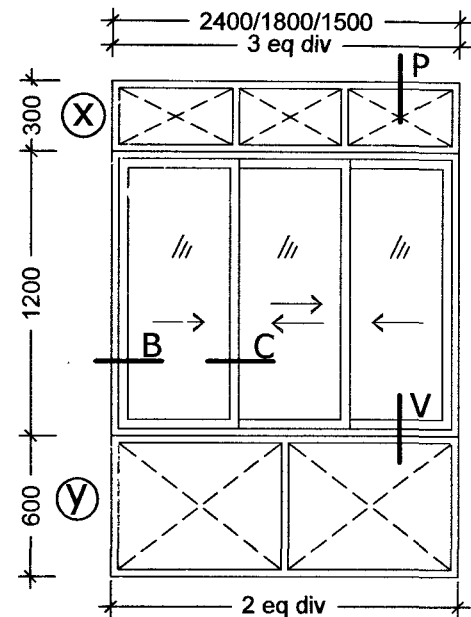
ELEVATION

ALW6 - 600 X 900
ALW6A - 600 X 1000



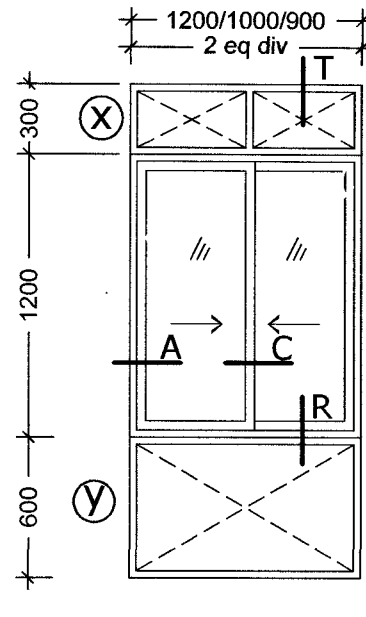
ELEVATION

ALV5 - 500 X 500
ALV6 - 600 X 500
ALV5A - 500 X 600
ALV6A - 600 X 600



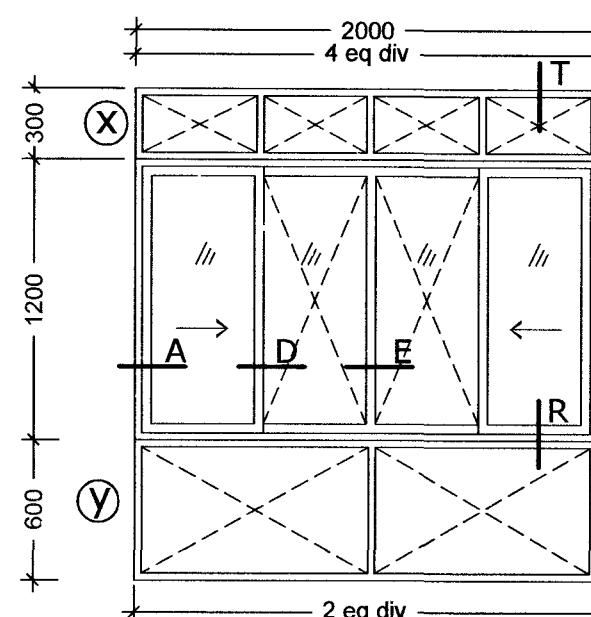
ELEVATION

ALW 24XY - 2400 X 2100
ALW 18XY - 1800 X 2100
ALW 15XY - 1500 X 2100



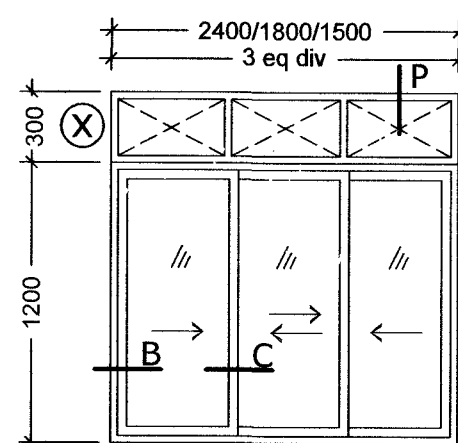
ELEVATION

ALW 12XY - 1200 X 2100
ALW 10XY - 1000 X 2100
ALW 9XY - 900 X 2100



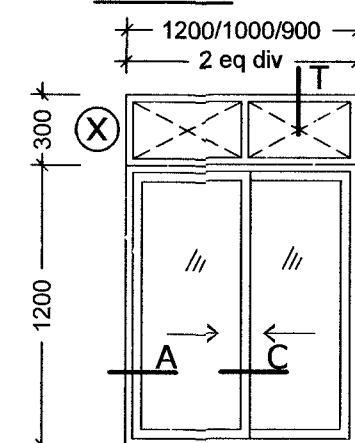
ELEVATION

ALW 20XY - 2000 X 2100



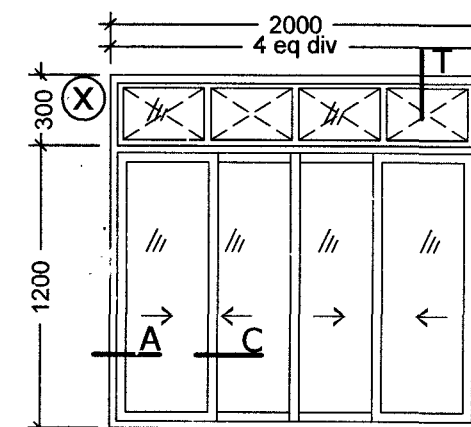
ELEVATION

ALW 24X - 2400 X 1500
ALW 18X - 1800 X 1500
ALW 15X - 1500 X 1500



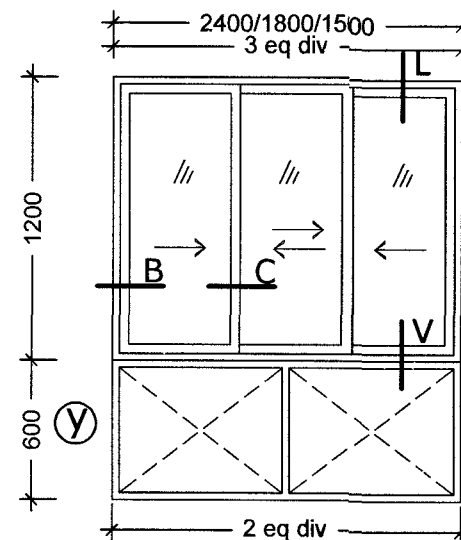
ELEVATION

ALW 12X - 1200 X 1500
ALW 10X - 1000 X 1500
ALW 9X - 900 X 1500



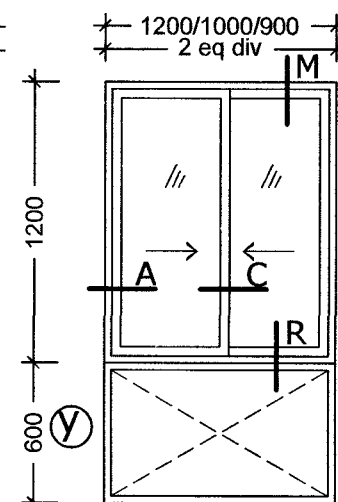
ELEVATION

ALW 20X - 2000 X 1500



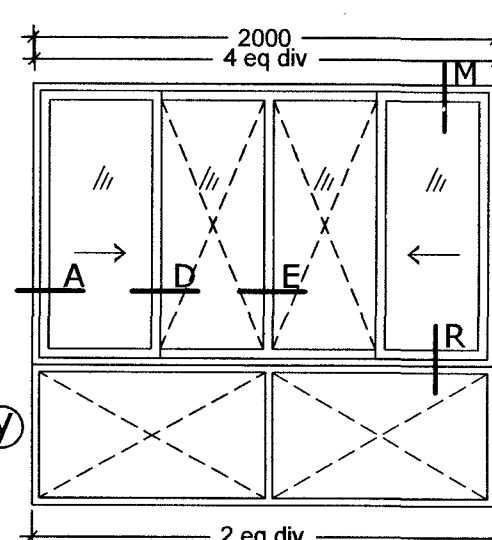
ELEVATION

ALW 24Y - 2400 X 1800
ALW 18Y - 1800 X 1800
ALW 15Y - 1500 X 1800



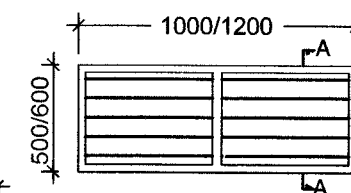
ELEVATION

ALW 12Y - 1200 X 1800
ALW 10Y - 1000 X 1800
ALW 9Y - 900 X 1800



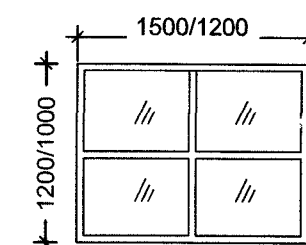
ELEVATION

ALW 20Y - 2000 X 1800



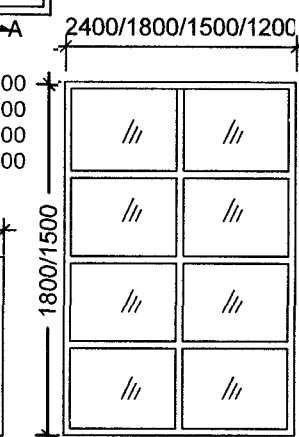
ELEVATION

ALV10 - 1000 X 500
ALV12 - 1200 X 500
ALV10A - 1200 X 600
ALV12A - 1200 X 600



ELEVATION

FG 1W - 1500 X 1200
FG 1X - 1500 X 1000
FG 2W - 1200 X 1200
FG 2X - 1200 X 1000



ELEVATION

FG 3Y - 2400 X 1800
FG 3Z - 2400 X 1500
FG 4Y - 1800 X 1800
FG 4Z - 1800 X 1500
FG 5Y - 1500 X 1800
FG 5Z - 1500 X 1500
FG 6Y - 1200 X 1800
FG 6Z - 1200 X 1500

SL NO	NOTES
1.	All dimensions are in millimeter.
2.	All fittings used shall confirm to BIS norms.
3.	Holes shall be provided on the vertical face of bottom guiding channel to drain out rain water.
4.	Window frames shall be fixed to wall/rcc surface with Rawl plug of carbon steel, HFV 8 x 80 of make H1L1T1, KLIMAS, KICHER and shall be provided at 300 c/c max. on sides, top and bottom.
5.	Sizes of Window Openings are Masonry Openings. Contractors shall check the dimensions of built-in-openings at site before erection of Window Frames/Shutters.
6.	Roller shall be of PVC with s/s ball bearing auto fixing as per shutter manufacturer instruction.
7.	After fixing the windows in position gap between wall and window shall be sealed with silicon sealant and breckon rod of make 'SUPREME' or its equivalent of 6 to 8 mm dia as per manufacturer instruction.
8.	EPDM gasket shall be confirm to ASTM D:2240 of make OSAKA, AVIGIRI.
9.	Wool pile shall be of 8 to 5 mm thk.
CONTINUED_____	